



# TOWN OF ERWIN

SELF-ASSESSMENT AND ADA TRANSITION PLAN



WithersRavenel  
Our People. Your Success.

- Required by Americans with Disabilities Act of 1991
- Required for public agencies with 50 or more employees
- Department of Justice enforcing due to liability
- Could jeopardize funding through NCDOT if not in compliance



# Plan Elements

- **Identify Barriers**
- **Town Website Assessment**
- **Public Input**
- **Identify Corrective Measures**
- **Specify a Compliance Schedule**
- **Adopt an ADA Policy and Grievance Procedure**
- **Designate an ADA Administrator and ADA Coordinator**

# Barriers to Accessibility

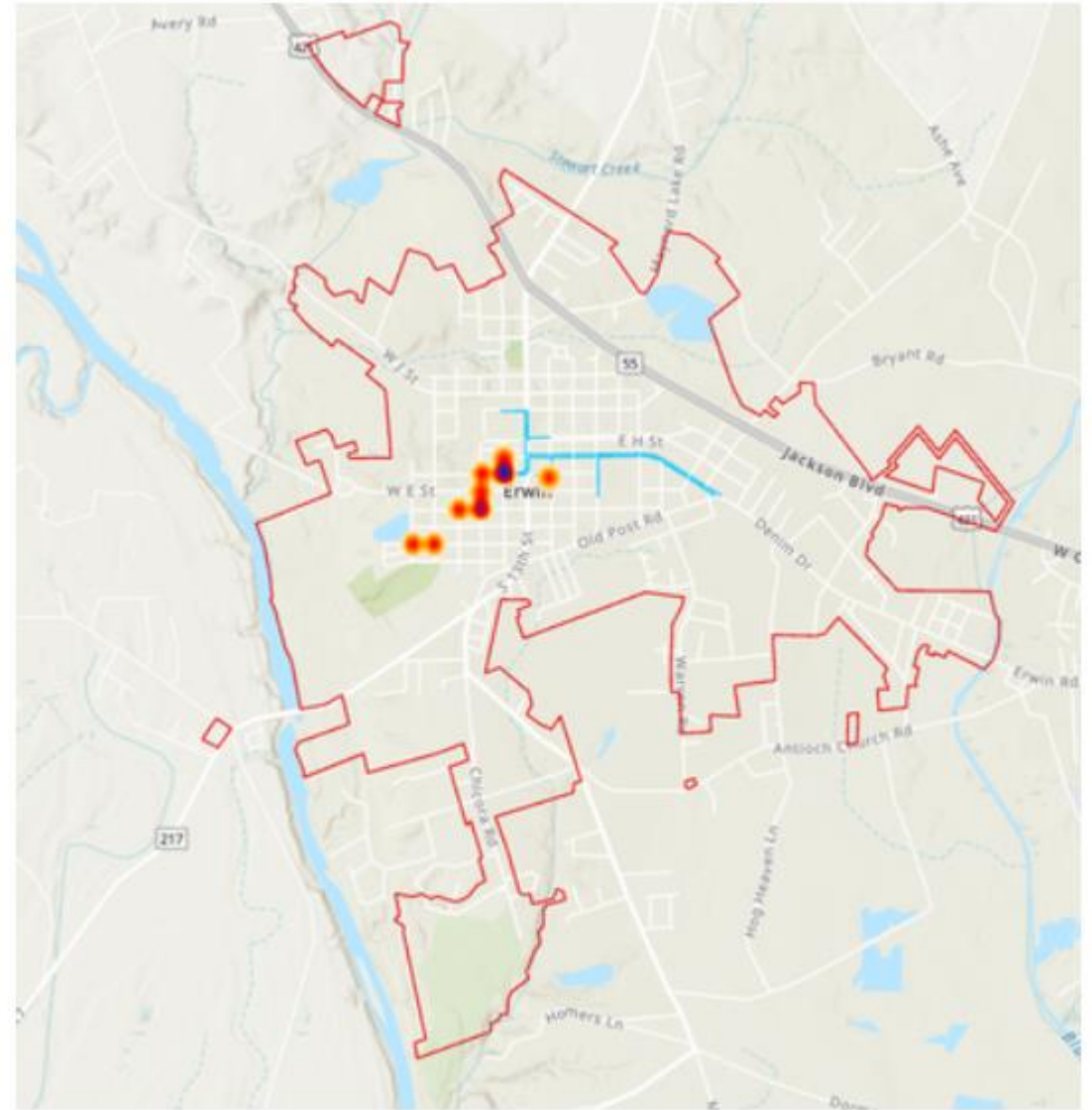
- **Pedestrian Facilities (PROWAG)**

- Sidewalks
- Curb Ramps
- Signage
- Pedestrian Signals
- Crosswalks



## • Identified Sidewalk/Curb Ramp Priorities

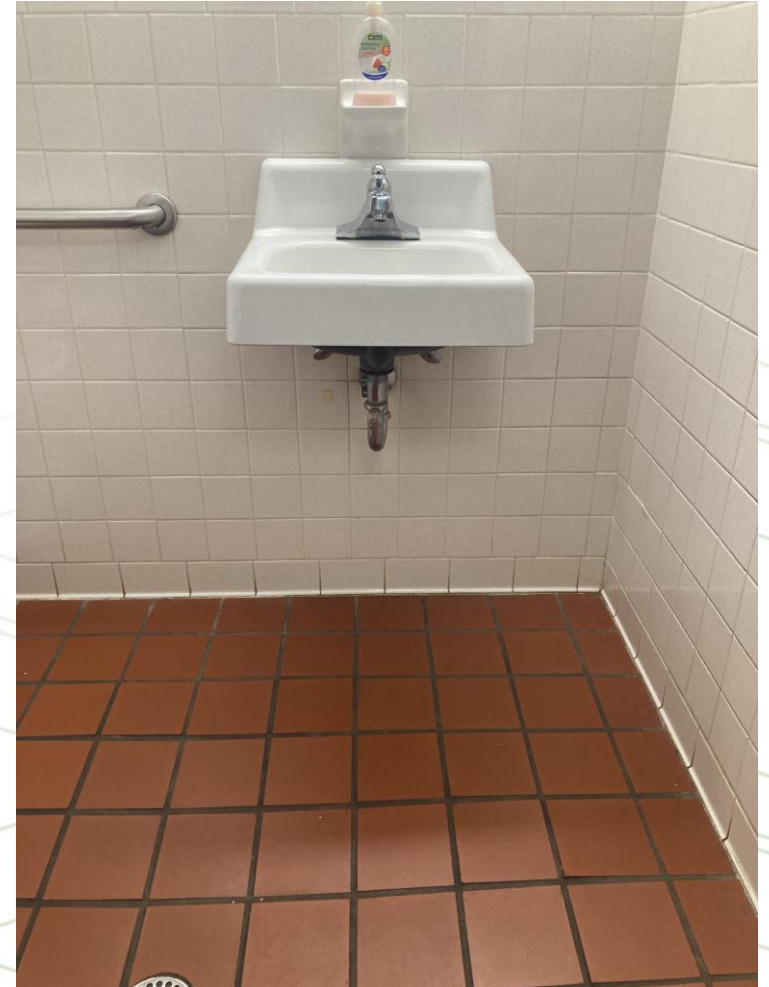
- Work with Staff to Identify Most Critical Needs
- Based on Current Conditions
- Number of Barrier Points
- Outstanding or Unusual Conditions
- Missing curb ramps.



# Barriers to Accessibility

- **Public Buildings / Parks (ADA2010)**

- Paper Towel/Hand Dryer Locations
- Navigable Space
- Grab Bars
- Mounting Heights
- Sink Drains
- Door Swings
- Signage
- Accessible Path
- Door Pull Pressure

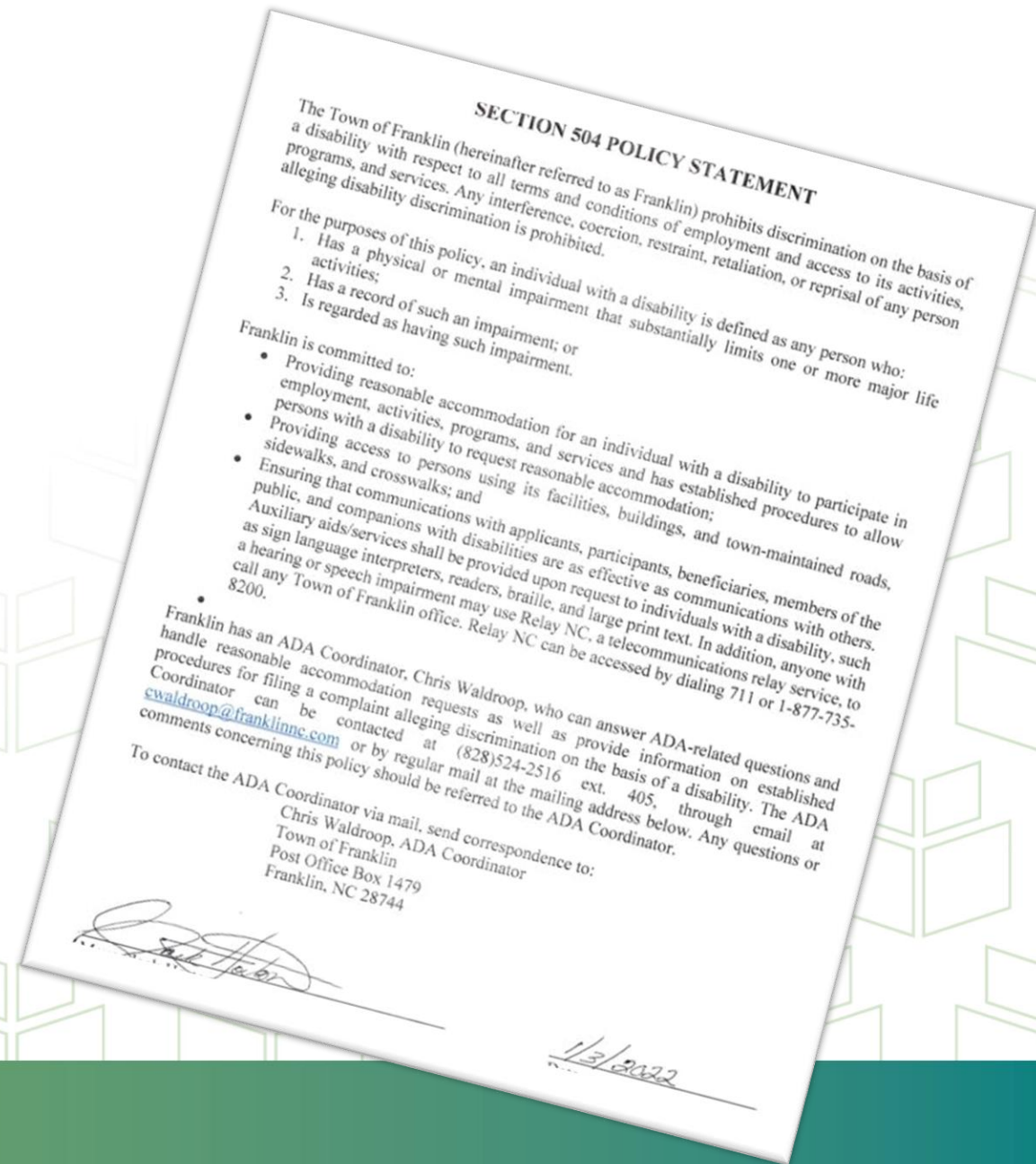


# Public Input

- **Town Board Meeting**
  - Public Attendance and Comments
- **Feedback**
  - Comments will be noted within the final version of the Transition Plan/Report.

# Other Items

- **ADA Position Statement and Grievance Procedure**
  - Development of ADA position statement (May 7, 2026).
  - Development of ADA grievance procedure (May 7, 2026).



# Fiscally Constrained Compliance Schedule

- 10-year compliance schedule
- Items can be grouped for efficiency
- Plan will need to be kept current
  - Update as items are completed or new items are added

Town of Franklin ADA Transition Plan

## PART 6 PLAN REQUIREMENT 3: SPECIFY A COMPLIANCE SCHEDULE

With an understanding of Town barriers and a strategy to remove them, the next step in this plan is to establish a schedule of remediation. Of course, remediation does not happen in a vacuum and is therefore subject to Town budgets and the economy. With the recent financial impacts of the COVID-19 outbreak, it will be difficult to estimate project costs and budgets in the future. Town of Franklin's staff orchestrating these remedial efforts will need to closely track the costs and project budgets in order to define estimates through each fiscal year. For the purposes of establishing a schedule, remediation costs will be generalized into five broad categories:

Table 14: Budget Categories

Category	Estimated Cost	Funding Description
"\$"	\$0 - \$999	ADA Maintenance Funds
"\$"	\$0 - \$999	Citizen Requests Funds
"\$\$"	\$1,000 - \$4,999	ADA Remedial Funds
"\$\$\$"	\$5,000 - \$9,999	ADA Transition Plan Special Funding
"\$\$\$\$"	\$10,000 and Up	Capital Improvement Plan Candidates

- ADA Maintenance Funds (\$) – These projects are in addition to the municipality's existing maintenance budget. Although these fixes are typically low cost, the municipality needs to ensure adequate budget to implement the recommended changes while still performing required regular maintenance. Examples of remediation efforts include adjusting door pulls, insulation of pipes and the addition of ADA parking signs.
- Citizen Request Funds (\$) – While not directly associated with specific accessibility barriers, these funds should be set aside on a yearly-basis upon plan approval. The intent of this budget is to have a small portion of money set aside by the municipality that can be used as new barriers to accessibility are identified by Franklin's citizens via Grievance Procedures Policy. The Town's ADA Coordinator will be in charge of using this budget to address any emergent barriers as they see fit.
- ADA Remedial Funds (\$\$) – These accessibility barriers will require more time and money than the previous category and have the potential to utilize private contractors or special materials. Funding for these barriers will need to be planned for at least a year in advance of the work. Planned projects for the following fiscal year can be itemized in the General Fund. Examples of such remedial projects include installation of new pedestrian signals, parking lot re-stripping projects and construction of new pedestrian ramps.
- ADA Transition Plan Special Funding (\$\$\$) – Special funding projects will need some degree of specialized materials or consultant assistance. Therefore, they will be more expensive than the previous examples of barrier removal. These projects will most likely rely on the work of the municipal staff to identify unique grant or funding opportunities from external sources in order to develop the project budget to remove these barriers. Examples of work requiring special funding would be the construction of new bathroom facilities or constructing accessible playground equipment.

PLAN REQUIREMENT 3: SPECIFY A COMPLIANCE SCHEDULE

43

# Final ADA Transition Plan

- **ADA Coordinator** – responsible for coordinating efforts of government entity to comply with Title II and Investigating any complaints that the entity has violated Title II.
- **ADA Administrator** - responsible for ADA Transition Plan Execution
- **ADA Policy Statement**
- **ADA Grievance Process**
- **Summary of the pedestrian facilities**
- **Summary of vertical facilities**
- **Information on methodology used for evaluation**
- **An improvement schedule for corrective measures and expected costs for remediation**
- **Appendices and any additional supplemental information including barrier assessments**
- **Summary of Public Meeting Comments**

## TOWN OF ERWIN, NC AMERICANS WITH DISABILITIES ACT TRANSITION PLAN

RELEASED: 05/7/2026





## Snow Bowden

ADA Coordinator

Town of Erwin

[townmanager@erwin-nc.org](mailto:townmanager@erwin-nc.org)

## Snow Bowden

ADA Administrator

Town of Erwin

[townmanager@erwin-nc.org](mailto:townmanager@erwin-nc.org)

## Ted Kallam, PE

Senior Project Manager

WithersRavenel

[tkallam@withersravenel.com](mailto:tkallam@withersravenel.com)

# Questions?